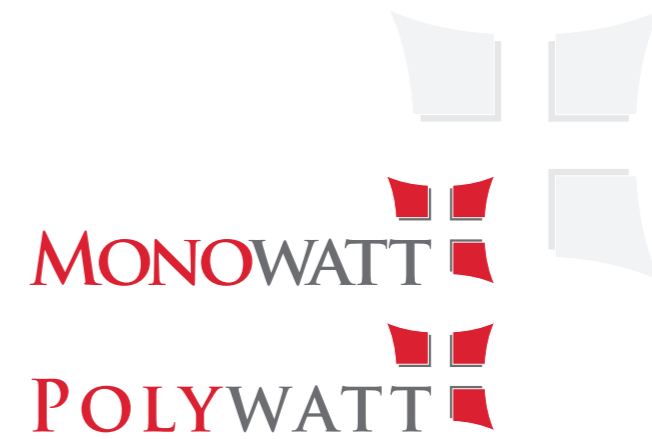




SWISSWATT
Schlätliweg 1
9052 Niederteufen

fon: +41 (0)71 511 56 10
fax: +41 (0)71 511 56 19
email: info@swiss-watt.com
web: www.swiss-watt.com

*Subject to errors and to technical changes as part of product improvement. Packaging Information V01/13
Technische Änderungen im Rahmen der Produktentwicklung sowie Fehler und Irrtümer vorbehalten. Packaging Information V01/13*

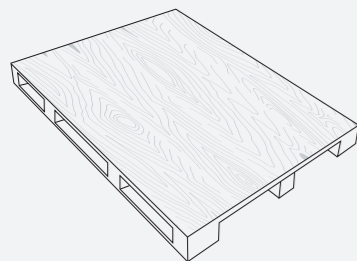


PACKAGING INFORMATION
VERPACKUNGSINFORMATIONEN

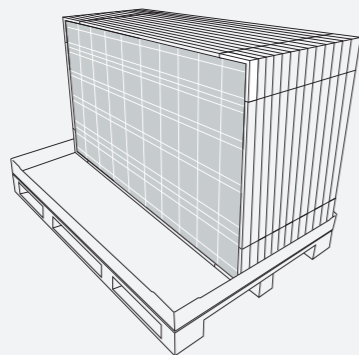
PACKAGING 20" CONTAINER / VERPACKUNG 20" CONTAINER

Module Type	Dimension / Abmessung			Quantity / Stückzahl			
	L(mm)	W(mm)	H(mm)	per Pallet	Gross Wight (kg) loaded Pallet	Pallet per 20"	Total Modules per 20" Container
MONOWATT 190-210 72c	1660	1130	2050	52	900 kg	6	312
MONOWATT 255-280 96c	1660	1130	2120	40	900 kg	6	240
MONOWATT 240-265 S 60c	1735	1150	2150	42	925 kg	6	252
MONOWATT 290-310 S 72c	2035	1150	2150	42	1100 kg	5	210
POLYWATT 230-250 60c	1735	1150	2150	42	925 kg	6	252
POLYWATT 275-300 72c	2035	1150	2150	42	1100 kg	5	210

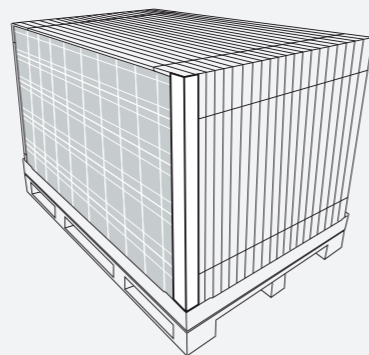
PALLET CONFIGURATION PALETTENAUFBAU



Wooden pallet
Holzpalette



Modules with protective corners
Module mit Kantenschutzecken

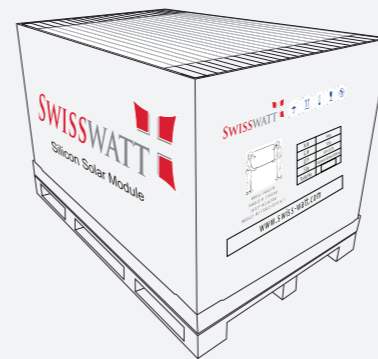


Long side cardboard protectors
Kartonprotectoren längsseitig

PACKAGING 40" CONTAINER / VERPACKUNG 40" CONTAINER

Module Type	Dimension / Abmessung			Quantity / Stückzahl			
	L(mm)	W(mm)	H(mm)	per Pallet	Gross Wight (kg) loaded Pallet	Pallet per 40"	Total Modules per 40" Container
MONOWATT 190-210 72c	1660	1130	2450	60	1050	14	840
MONOWATT 255-280 96c	1660	1130	2430	44	1005	14	616
MONOWATT 240-265 S 60c	1735	1150	2510	48	1070	13	624
MONOWATT 290-310 S 72c	2035	1150	2510	48	1260	11	528
POLYWATT 230-250 60c	1735	1150	2510	48	1070	13	624
POLYWATT 275-300 72c	2035	1150	2510	48	1260 kg	11	528

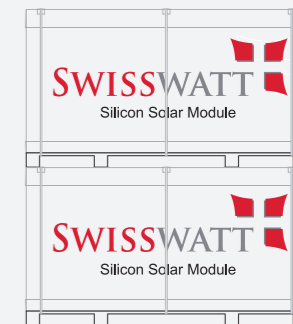
PALLET CONFIGURATION PALETTENAUFBAU



Outer box with content information
Aussenschachtel mit Inhaltsinformationen



Plastic strapping
Kunststoffbandumreifung



Stacking up to a maximum of 2 pallets
Maximal 2 Paletten stapelbar